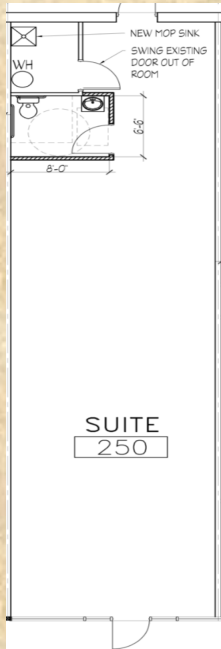


# FOR RENT 1931 N. Shawano St., Suite. 250 New London, WI 54961 1,105 Square Feet Plus CAM and Taxes



## LOCATION



## FEATURES / PRICING

- 1,105 square feet
- Commercial neighborhood
- Located 20 miles west of Appleton
- Parking lot available
- Visibility / Traffic: Medium
- Zoning: B-2
- Water: City water
- Sanitary: sewer

Median Household Income Within 40 Miles of New London		
	2020 Average Income	Population
City of New London	\$54,418	7,348
City of Appleton	\$61,475	75,644
City of Oshkosh	\$51,282	66,816
Outagamie County	\$68,441	190,705
Waupaca County	\$60,106	51,812

**FOR MORE INFORMATION  
PLEASE CONTACT:**

**Zieman Commercial  
Properties, LLC  
Ted Zieman  
(920) 309-8990**