

NAI Pfefferle

For Sale or Lease

18,040 SF

Retail Building with
Room for Expansion



1919 N. Shawano Street

New London, WI.

Very well maintained building currently operating as a grocery store. Freshly resurfaced parking lot with an abundance of parking.

Owner will demise if needed.

Room for +/- 6,400 SF expansion of north side of building.

Excellent location on north side of New London with easy access to Highways 45 and 54.

PRICE	\$995,000
-------	-----------

LEASE RATE	\$8/SF
------------	--------

BUILDING SIZE	18,040 SF
---------------	-----------

ACRES	2.71
-------	------

PARKING	+/- 80 Stalls
---------	---------------

YEAR BUILT	1990
------------	------

For more information:

Greg Landwehr, SIOR

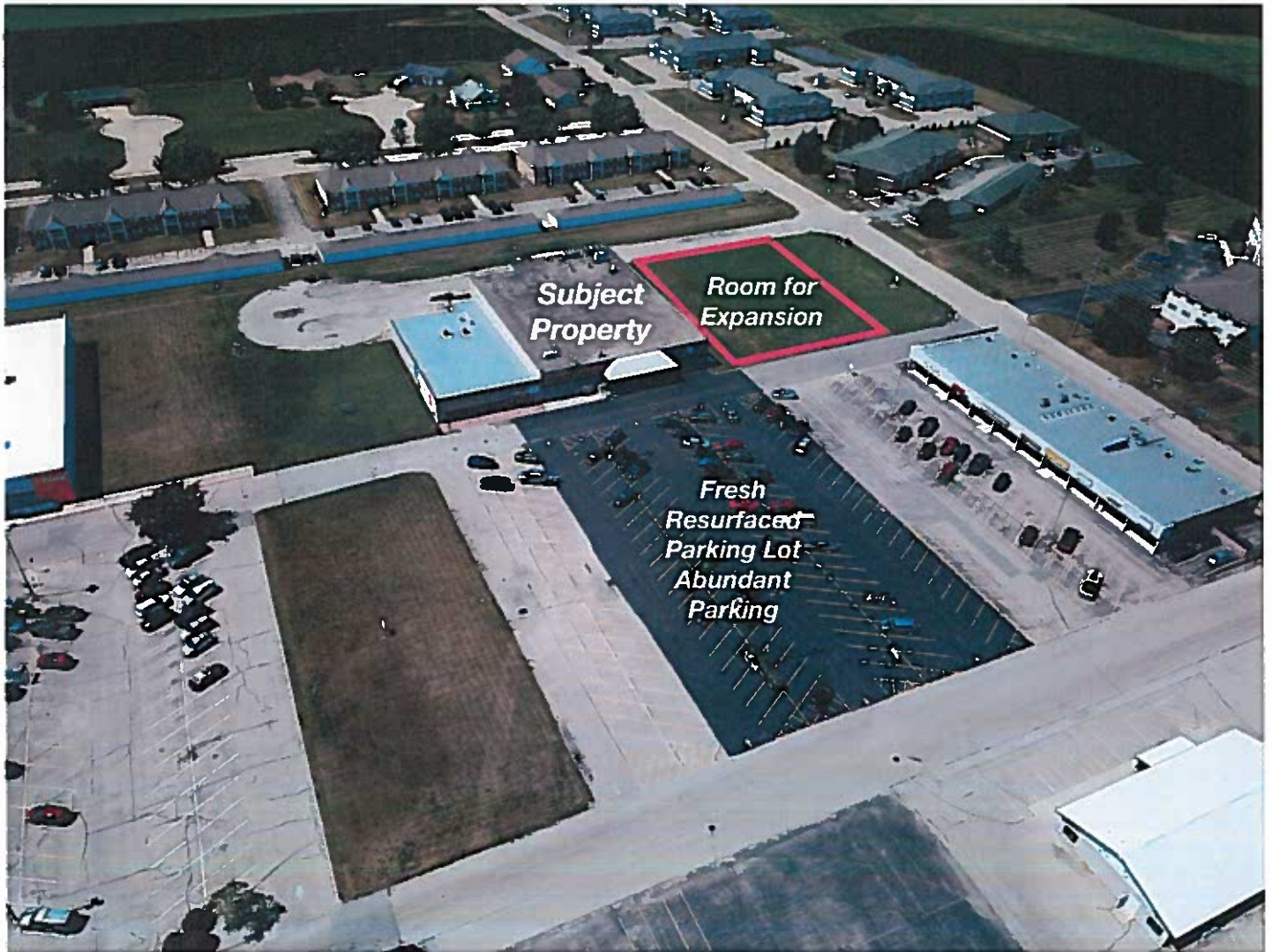
920.560.5037 • gregl@naipfefferle.com

THE INFORMATION CONTAINED HEREIN WAS OBTAINED FROM SOURCES BELIEVED RELIABLE. HOWEVER, NAI PFEFFERLE MAKES NO GUARANTEES, WARRANTIES, OR REPRESENTATIONS AS TO THE COMPLETENESS OR ACCURACY THEREOF. THE PRESENTATION OF THIS PROPERTY IS SUBMITTED SUBJECT TO ERRORS, OMISSION, CHANGE OF PRICE OR OTHER CONDITIONS, PRIOR SALE OR LEASE, OR WITHDRAWAL WITHOUT NOTICE.

200 E. Washington Street, Suite 2A
Appleton, WI 54911
920.968.4700

naipfefferle.com

For Sale or Lease
1919 N. Shawano Street
New London, WI.



200 E. Washington Street, Suite 2A
Appleton, WI 54911
920.968.4700

NAIPfefferle

naipfefferle.com

For Sale or Lease
 1919 N. Shawano Street
 New London, WI.



Travel Times

APPLETON	40 MINUTES
GREEN BAY	59 MINUTES
OSHKOSH	41 MINUTES
MILWAUKEE	2 HOURS

2020 Demographics

	1 Mile	3 Miles	5 Miles
Population	832	8,689	11,817
Average HH Income	\$39,262	\$61,323	\$64,887
Total Households	426	3,749	4,997
Total Employees	778	4,142	4,400



200 E. Washington Street, Suite 2A
 Appleton, WI 54911
 920.968.4700
naipfefferle.com