

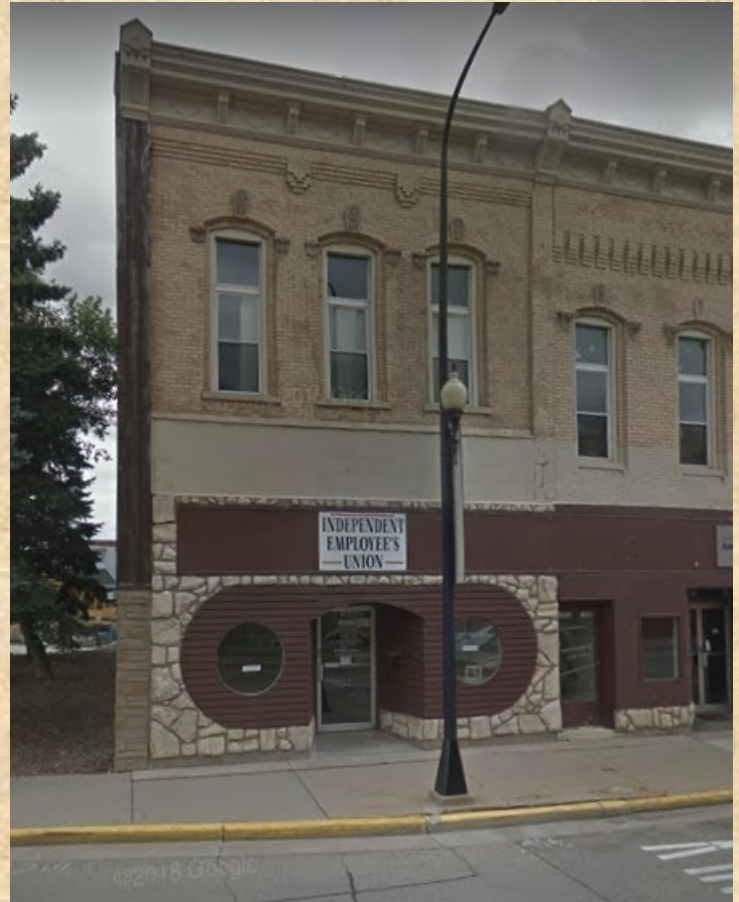
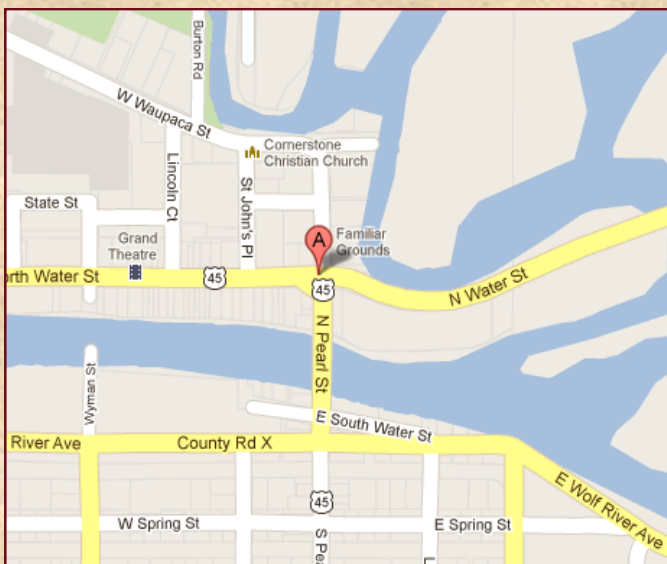
FOR RENT

106 W. North Water St.
New London, WI 54961
1,600 square feet

FEATURES

- 1,600 Square feet
- Lower office space
- Located 20 miles west of Appleton
- Parking: On street across street
- Visibility / Traffic: Heavy
- Daily Traffic (as of 2009): 5,000 vehicles
- Zoning: B-1
- Exterior: Brick with block back - up

LOCATION



Median Household Income Within 40 Miles of New London

	2009 Average Income	Population
City of New London	\$46,346	7,295
City of Appleton	\$51,723	72,623
City of Oshkosh	\$42,328	66,083
Outagamie County	\$55,106	176,695
Waupaca County	\$48,420	52,410

FOR MORE INFORMATION
PLEASE CONTACT:

Chris Schricker
(920) 407-0359